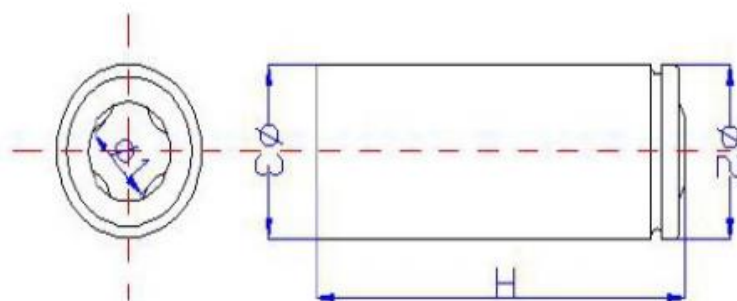


# Rechargeable LX ion 18650 cell FE18650HE\_5005

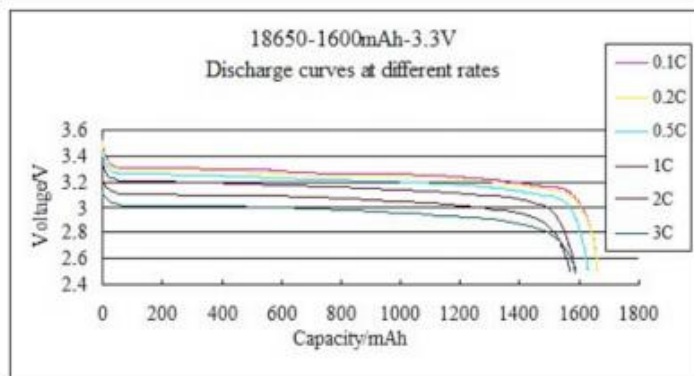
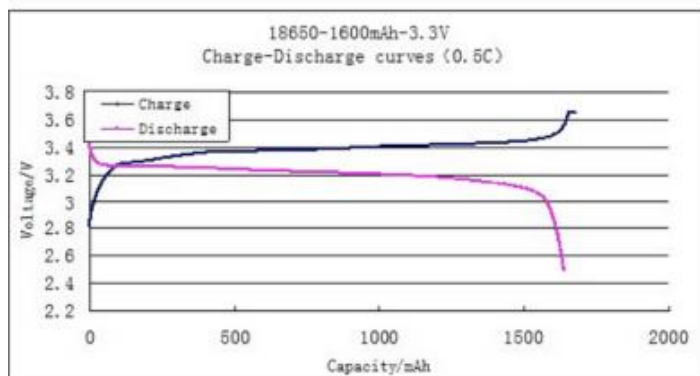
ITEM	SPECIFICATION
Chemistry	LiFePO4
Nominal capacity (0.5C)	1600 mAh
Nominal voltage	3.2 V
Energy	5.12 Wh
Battery weight	42 g
CHARGE	
Standard charge method	CC/CV
Current	1.6 A max
Voltage	3.6 V
Cut-off current	0.01 C
Temperature range	0°C to 55°C
DISCHARGE	
Maximum discharge current	4.8 A
Discharge cut-off	2.5 V
Temperature range	-20°C to +60°C



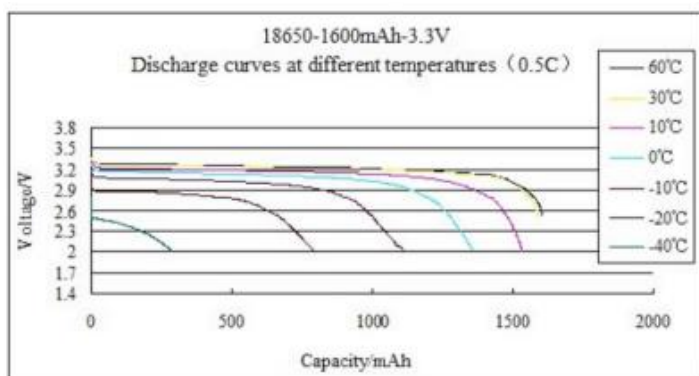
Item	Dimension (mm)
Diameter (Φ)	18.2±0.1
Height (H)	64.8±0.4

LX ion an entity of TYVA Energie

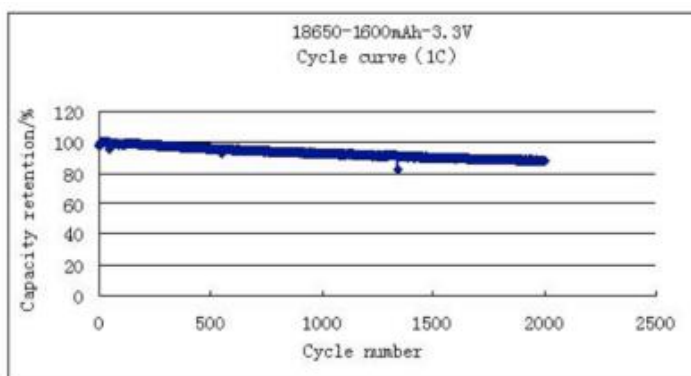
## Charge - Discharge curves



## Discharge / Temperatures



## Cycle life



**Important note:** performance may vary depending on, but not limited to cell usage and application. If cells are used outside specifications, performance will diminish. All specifications are subject to change without notice. All Information provided herein is believed, but not guaranteed, to be current and accurate.